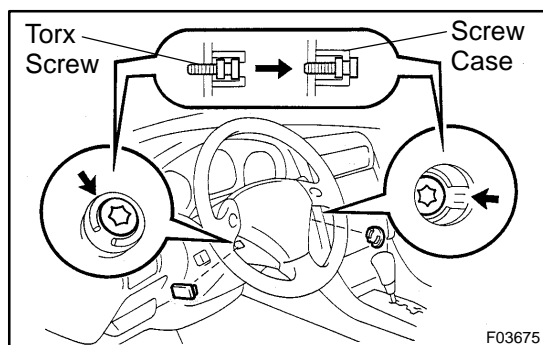


## REMOVAL

### 1. REMOVE STEERING WHEEL PAD

#### NOTICE:

If the airbag connector is disconnected with the ignition switch at ON or ACC, DTCs will be recorded.



- (a) Place the front wheels facing straight ahead.
- (b) 2JZ-GE:  
Remove the steering wheel lower No.2 and No.3 covers.
- (c) 3UZ-FE:  
Remove the steering wheel No. 2 cover and pad switch modulator cover.
- (d) Using a torx socket wrench, loosen the 2 torx screws.

#### HINT:

Loosen the 2 screws until the groove along the screw circumference catches on the screw case.

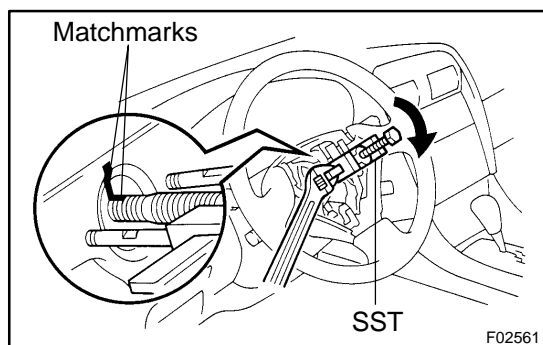
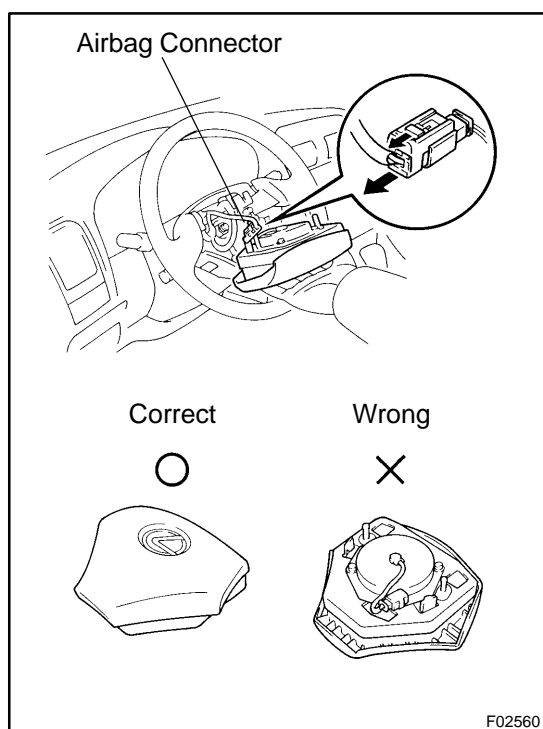
- (e) Pull the wheel pad from the steering wheel and disconnect the airbag connector.

#### CAUTION:

- When storing the wheel pad, keep the upper surface of the pad facing upward.
- Never disassemble the wheel pad.

#### NOTICE:

When removing the wheel pad, take care not to pull the airbag wire harness.



### 2. REMOVE STEERING WHEEL

- (a) Disconnect the connector.
- (b) Remove the steering wheel set nut.
- (c) Place matchmarks on the steering wheel and main shaft assembly.
- (d) Using SST, remove the wheel.  
SST 09950-50012 (09951-05010, 09952-05010, 09953-05020, 09954-05020)

**3. REMOVE UPPER AND LOWER COLUMN COVERS**

Remove the 3 screws, column upper and lower covers.

**4. REMOVE COMBINATION SWITCH WITH SPIRAL CABLE**

- (a) Disconnect the 4 connectors.
- (b) Disconnect the airbag connector.
- (c) Remove the 3 screws and combination switch with spiral cable.

**5. REMOVE SPIRAL CABLE (See page BE-34)****NOTICE:**

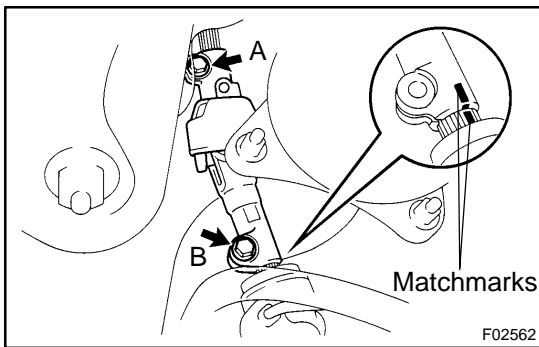
**Do not disassemble the spiral cable or apply oil to it.**

**6. REMOVE NO. 1 UNDER COVER**

- (a) Remove the 3 screws.
- (b) Disconnect the DLC3.
- (c) Disconnect the connectors and remove the No. 1 under cover.

**7. REMOVE FINISH PLATE AND END PAD****8. REMOVE NO. 1 SAFETY PAD**

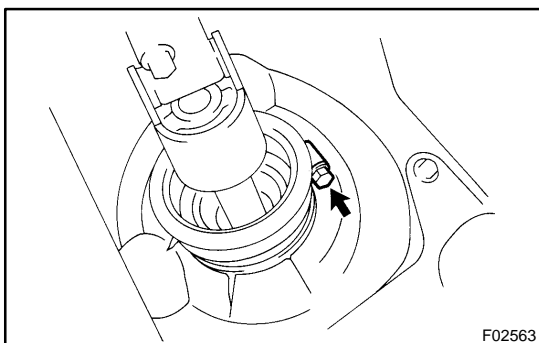
- (a) Remove the 2 screws and disconnect the hood lock release lever from the No. 1 safety pad.
- (b) Remove 4 pad set bolts and screw and No. 1 safety pad.

**9. REMOVE HEATER TO REGISTER DUCT NO. 7****10. DISCONNECT INTERMEDIATE SHAFT ASSEMBLY**

- (a) Place matchmarks on the intermediate shaft and control valve shaft.
- (b) Loosen the bolt "A" and remove the bolt "B" and disconnect the intermediate shaft assembly.

**11. REMOVE STEERING COLUMN ASSEMBLY**

- (a) Disconnect the connectors.
- (b) Remove the brake pedal return spring.



- (c) Loosen the hole cover clamp.
- (d) Remove the 4 column assembly set nuts and steering column assembly.

**12. REMOVE INTERMEDIATE SHAFT ASSEMBLY**

Remove the bolt "A" and intermediate shaft assembly.

**13. REMOVE DUST COVER****14. 3UZ-FE:****REMOVE STEERING PAD SWITCH MODULATOR**

Remove the 2 screws and steering pad switch modulator.